



Standard Inventory Item

358 Win

B04FB8

05/29/1979

08/03/2022

Revision

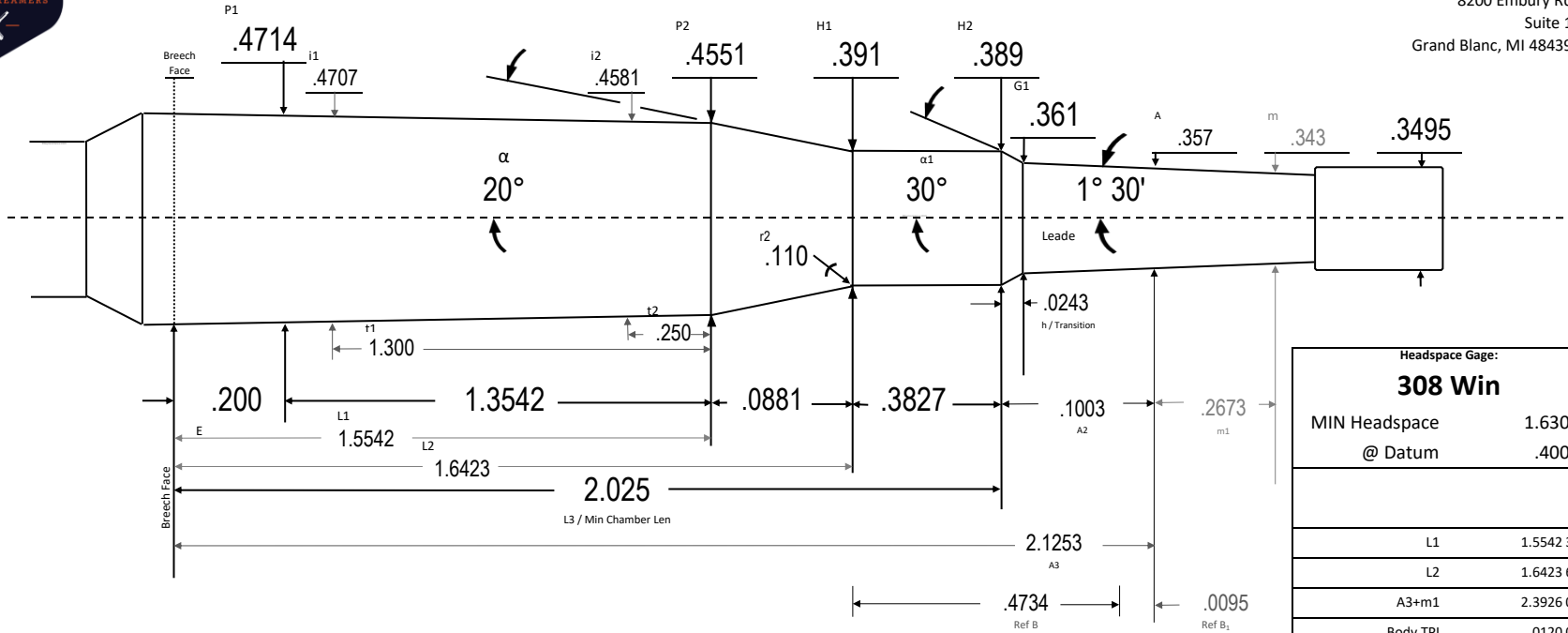
Manson Reamers

Contact us at:
support@mansonreamers.com
(810) 953-0732

8200 Embury Rd
Suite 1

Grand Blanc, MI 48439

358 Win



SAAMI 2024 - Translated 2024.08.04

Note that SAAMI lists headspace as 1.6025 to the .420 datum, which is simply .308 Win headspace recalculated to a different datum dia. 308 Win headspace gages are the correct gages to use.

Reamers dated prior to 01/24 were made to D Manson's tighter body dias. (.470 & .455)

Headspace Gage:	
308 Win	
MIN Headspace	1.6300
@ Datum	.4000
L1	1.5542 39
L2	1.6423 64
A3+m1	2.3926 00
Body TPI	.0120 00
Breach Face Dia	.4738 00
~Chamber Vol in ³	.2757 93
Drawn:	Ray Gross
SD	2024.08.04
Template TT	V10.6 24.08.01
Dia Tolerance	+ .001/- .000
Length Tolerance	+ .005/- .000
Angle Tolerance	+/- 15'
Use Reamer Blank	0
Print is not to scale	



358 Win

358 Win